

RGE 24

# Beaumont Area – Early Days

CITY OF ED

814

Used to be called Sandy Lake

Joseph Goudreau - 1900



Pierre Bérubé - 1912



Ludger Gagnon - 1912



School



Morin Home



Charbonneau (P.O.)



2nd Church - 1895

Jean Royer - 1904



1st Church (log) - 1894



Fouquet School



Arthur Leblanc - 1927

Presbyterian Church & Clearwater Cemetery

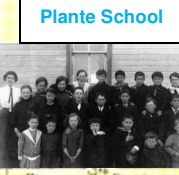


Clearwater School

Maisonneuve - 1926



Methodist Church



Plante School

Emile Rodrigue



623

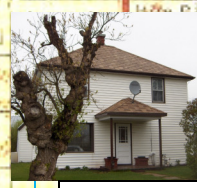
# RGE 24

## Beaumont Area - Now

814



Original Ellett Home [New location]



Joseph Goudreau Home - 1900



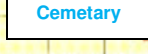
Morin Home



William Goudreau



Leblanc - 1927



Cemetery



Maisonneuve - 1926

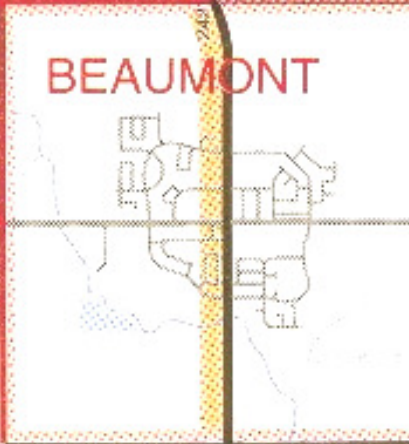


Chalifoux Farm



Rodrigue Home

CITY OF ED



BEAUMONT

CANADIAN LAKE

IRVINE

CLEARWATER PARK

SANDWICH LAKE

LAKE

623